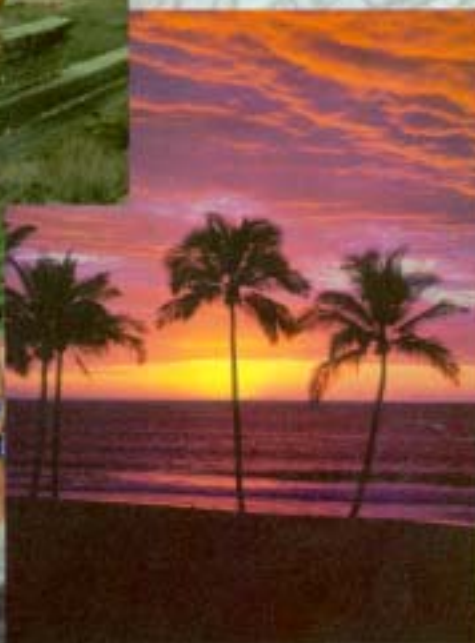
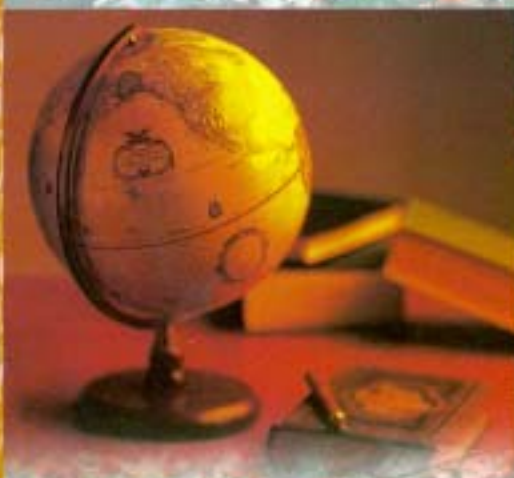


CALIFORNIA
STATE UNIVERSITY

Dominguez Hills

American Language & Culture Program

- How to Apply
- Living Here
- Contacts
- Student Services





With enthusiasm, We invite you to Dominguez Hills American Language and Culture Program

Intensive English Program (IEP)

The IEP offers six levels in regular eight-week intensive English language sessions throughout the year. This program is for individuals with academic or professional goals such as American university admission or International business. To achieve these goals we offer TOEFL preparation.

“The
cultural diversity on
campus
molds you
into seeing more
than your own
world —
it broadens
your
horizons.”

BRENDA OWENS,
student, sociology



Academic & TOEFL Preparation

The standard course of study includes up to 26 hours per week.

- ▷ 20 hours of required core courses including conversation, listening, grammar, reading, writing & vocabulary.
- ▷ 6 additional hours of classes are available on an elective basis at no additional cost!
- ▷ Elective classes typically include TOEFL preparation, pronunciation, computers, & vocabulary.
- ▷ Institutional TOEFL (accepted for admission into the University) offered six times yearly.

I-20

The American Language and Culture Program issues an I-20 to qualified students. Conditional admission I-20's are available for qualified students

Certificate of Completion

All students who successfully complete a program receive a certificate of completion.

Conditional Admission

- ▷ To California State University, Dominguez Hills
- ▷ To local Community Colleges
- ▷ Open University: Advanced English language students may take university courses for credit via the Open University system, if they meet requirements and space is available. Some of the many areas of study are:

- | | |
|---------------------------|--------------------|
| • Business Administration | • Economics |
| • Physics | • Clinical Science |
| • One Year MBA | • Biology |
| • Computer Science | • Nursing |
| • Genetics | • TESL |

Academic Advising

- ▷ Open University Courses - College credit classes while you study ESL
- ▷ College/University Choices - We help you select the right college or university
- ▷ Major/Study Choices - We help you select the best program or major



LEARNING & LIVING AT CSU DOMINGUEZ HILLS

Safety

The University offers a very safe environment due to its location in a residential area of a small suburban city. The campus has an excellent security system, and has been rated the safest California State University campus.

Housing

Campus Apartments, Fully-Furnished: We are very fortunate in having very nice campus apartments available all year for use by students in the American Language and Culture Program. This is a great advantage since ALCP students can have housing available on arrival, can live with American students and practice their English, have only a short walk to classes, and can participate easily in all the recreational and cultural activities on campus.

- ▷ Homestay: live with an American family for full-time English practice, while learning and living American culture.
- ▷ Hotel: rooms available at local hotels at reasonable rates, with meals

Activities & Features

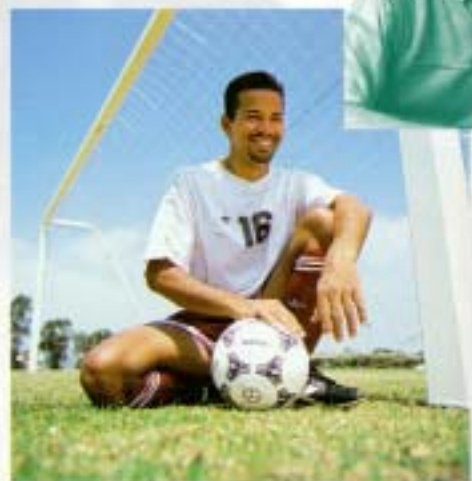
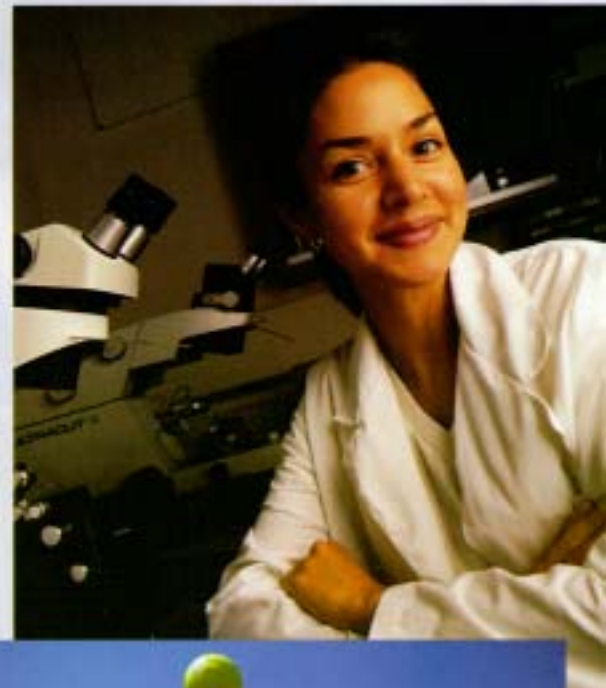
- ▷ Campus Recreation: soccer field, swimming pool, tennis, basketball and volleyball courts, weight room, track, Olympic bicycle velodrome (1984 Los Angeles Olympiad)
- ▷ Campus Facilities: International Center, college clubs, organizations, student union, restaurants, labs, health services, library, film series, concert music series, plays
- ▷ Community: Hollywood, Beverly Hills, Disneyland, Universal Studios, Magic Mountain, Westwood, UCLA, USC
- ▷ Outdoors: beaches, deserts, mountains, winter snow skiing, year-round ocean sailing, jet skiing, surfing, hiking
- ▷ Computer Lab: IBM & MACINTOSH computers with FREE E-Mail accounts!

Children's & Teen Programs

Summer session (2 - 12 weeks) and winter inter-session (2 - 4 weeks)

Local Travel

Destination	Minutes	Hours	Hours
Local Beaches	15-20	San Diego 2	Las Vegas 4-5
Los Angeles	25-30	Palm Springs 2	Grand Canyon 8
Disneyland	40-45	Mexico 2 1/2	San Francisco 8-9
Beverly Hills	40-45	Colorado River 4	Hollywood 1



Join us at
CSU Dominguez Hills
for the American Cultural
e x p e r i e n c e
of your life



The Location

CSUDH is a medium-sized university campus located in the heart of beautiful Southern California, a short drive from downtown Los Angeles, Hollywood, Beverly Hills, Disneyland, Magic Mountain and other world famous Southern California attractions. The modern campus is in a safe, residential suburb between Los Angeles and Long Beach, only minutes from the sunny California beaches.

The Climate

Enjoy the famous Southern California climate, with warm winters averaging maximum temperatures of 17° - 19° C in January and warm, dry summers averaging maximum temperatures of 24° - 28° C.

AMERICAN LANGUAGE AND CULTURE PROGRAM

Intensive English Program

The Intensive English Program (IEP) offers an eight-week intensive English language program for students with academic or professional goals. (Also, Conditional Admission is available for students who meet the academic requirements but lack the language requirements.)

The program is offered six times per year and includes instruction on passing the TOEFL, required for entrance into an American university.

Each session is up to 26 hours per week and includes a coordinated program of conversation, reading, vocabulary, grammar, writing, pronunciation and listening.

TOEFL Students from all over the world enroll in this multi-level program and can continue to improve their skills by advancing from session to session.

- Concurrent enrollment in credit classes for those who qualify
- TOEFL pronunciation and other electives
- A Certificate of Achievement is awarded upon successful completion of at least one eight-week session
- Qualified students from outside the United States are eligible for a student visa
- Individual courses may also be taken by part-time students

For more information on Academic/TOEFL Preparation, Advanced English classes, Short-Term Programs, such as ESL Teacher's Programs, or for further information on any other topic, please contact:

AMERICAN LANGUAGE AND CULTURE PROGRAM

DIVISION OF EXTENDED EDUCATION

California State University, Dominguez Hills
1000 East Victoria Street, SAC 1143, Carson, CA USA 90747

Telephone: (310) 243-3830 • Fax: (310) 516-4418

E-mail: alcp@dhvx20.csudh.edu www: <http://csudh.edu/alcp>