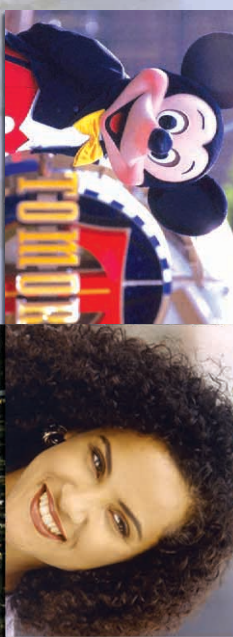
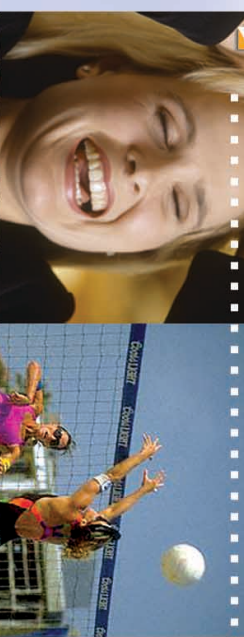




California State University
Dominguez Hills

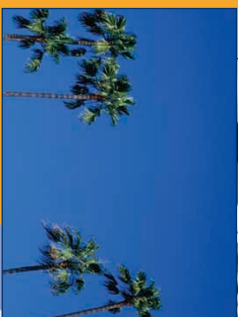
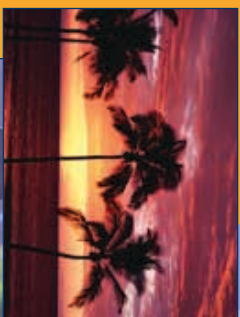
DIVISION OF EXTENDED EDUCATION

CALIFORNIA STATE UNIVERSITY DOMINGUEZ HILLS



- ▶ How to Apply
- ▶ Housing
- ▶ Contact Information
- ▶ Student Services





Location

California State University Dominguez Hills is an urban university. The campus is located in the heart of beautiful Southern California, just minutes from downtown Los Angeles, Hollywood, Beverly Hills, Disneyland, Magic Mountain and other world famous Southern California attractions. The modern campus is in a safe, residential suburb between Los Angeles and Long Beach, a short drive from sunny California beaches. The campus has an excellent security system, and has been rated the safest California State University campus.

Climate

Enjoy the famous Southern California climate, with warm winters averaging temperatures of 17° - 19° C in January and warm, dry summers averaging 24° - 28° C.

Intensive English Program (IEP)

The IEP offers six levels in regular eight-week intensive English language sessions throughout the year. This program is for individuals with academic or professional goals such as American university admission or international business. To achieve these goals we offer TOEFL preparation and English for business.

Academic Preparation

- Required core courses of 20 hours weekly include conversation, listening, grammar, reading and vocabulary and writing (25 to 29 hours including optional classes).
- Additional elective classes and one-on-one tutoring are available at no additional cost.
- Typical elective classes include TOEFL preparation, pronunciation, computers, vocabulary, and idioms.

TOEFL Preparation

- The standard course of study is designed to prepare students for the TOEFL and up to 4 hours per week of additional TOEFL specific preparation is available at no cost.
- Institutional TOEFL: accepted for admission into the University and local colleges.

Certificate of Completion

All students who successfully complete the program receive a certificate of completion.

I-20

The American Language and Culture Program is authorized to issue I-20s to qualified students.

Conditional Admission

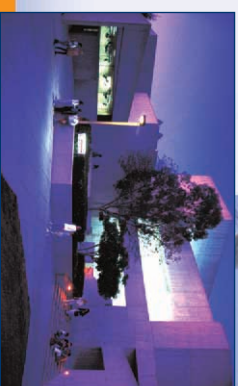
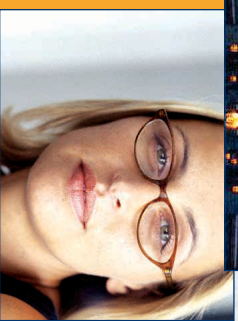
Conditional admission I-20s for qualified students are processed directly through ALCP.

University Classes & Open University

Advanced English language students may take university courses for credit via the Open University system, if they meet requirements and space is available.

Popular Majors

- Biology
- Business
- Administration
- Clinical Science
- Communications
- Computer Science
- English / TESL
- Economics
- MBA
- Physics
- Political Science
- Public Administration
- Quality Assurance



Academic Advising

- College/University Choices - We help you select the right college or university.
- Major/Study Choices - We help you select the best program or degree.
- Open University Courses - College credit classes while you study ESL.

Safety

The University offers a very safe environment due to its location in a residential area of a small suburban city.

Housing

- Campus Apartments, Fully-Furnished: The Language Program is fortunate in having campus apartments available all year for use by students in the American Language and Culture Program. This is a great advantage since ALCP students have housing available on arrival, live with American students and practice their English, have only a short walk to classes, and participate easily in all the recreational and cultural activities on campus.
- Homestay: live with an American family for full-time English practice, while learning and living American culture.
- Hotel: rooms are available for short-term students at local hotels at reasonable rates.

Local Activities & Attractions

- Hollywood, Beverly Hills, Disneyland, Universal Studios, Magic Mountain.
- Pacific beaches, deserts, mountains, winter snow skiing, surfing, and year-round ocean sailing.

LOCAL TRAVEL

Destination	Minutes	Destination	Hours	Destination	Hours
Local Beaches	15-20	San Diego	2	Las Vegas	4-5
Beverly Hills	40-45	Palm Springs	2	Death Valley	7-8
Disneyland	40-50	Mexico	3	Grand Canyon	8
Los Angeles	25-30	Colorado River	4	San Francisco	8-9

Campus Features & Facilities

- Los Angeles Galaxy MLS soccer stadium, Pete Sampras Tennis Complex and National Training Center; campus facilities include swimming pool, basketball and volleyball courts, weight room.
- International Student Services, college clubs, organizations, student union, restaurants, labs, health services, library, film series, concert music series.

Computer Labs

IBM & MACINTOSH computer labs are located throughout the campus and housing.

Short-Term Programs

ALCP creates custom programs for short-term groups of international visitors. Although most programs take place from mid-June through mid-September, flexible year-round scheduling is available. All study materials are included. Short-term programs can be customized for a specific group of visitors from a single occupation or interest group, such as:

- Youth and Teen Study / Tour programs designed for ages 10 through 16.
- English for Elementary and High School Teachers.
- International Business English for Corporate and Government professionals.
- Groups interested in cross-cultural communication.

