

STUDY HOW THE WORLD WORKS!



sociology (so·ci·ol·o·gy)
the study of HUMAN behavior
in society.



What is sociology?

Sociology is the scientific study of human society. It examines how people relate and interact, how groups behave and how society is organized and structured.

You will learn to recognize how things like culture, gender, social class and the family influence the way we behave.

Sociology can broaden your views and help you see things in a new way. This will add to your own views and experiences.

Sociology is also fun! You will study it in sports, the media, criminal justice and other interesting settings.



What kind of classes are offered in sociology?

- The Family
- Deviant Behavior
- Statistics
- Social Movements
- Sports Sociology
- Black Communities
- Gangs and Adolescent Behavior
- Social Research
- Juvenile Delinquency
- Racial and Ethnic Relations
- Social Organizations
- Corrections
- Visual Sociology
- Sociology of Education
- Sociology of Law
- Gender Studies

AND MAKE IT WORK FOR YOU!

What can I do with my sociology degree?

Sociology is a valuable degree for students planning careers in a wide variety of fields including:

- Law Enforcement
- Social Research
- Human Resources
- Public Relations
- Media Relations
- Corporate Management
- Criminology
- Public Administration
- Education
- Social Work
- Market Research
- Community Activism
- Public Service

Sociology provides a strong background for those planning to enter law, business, teaching, medicine, community service, planning and politics.



A broad range of internships are available in sociological research and applied sociology through the department.

Courses are offered in mornings, evenings and on Saturdays with working students in mind.



A degree in sociology provides you with a competitive advantage.

Sociology teaches you to step outside of yourself and to view the world differently.

THE CSUDH SOCIOLOGY FACULTY



Bill Blisckhe



Ed Bryan



Bob Christe



Fumiko Hosokawa



Richard Hovard



Kanghu Hsu



Matt Mutchler



John Quicker



Alan Ryave



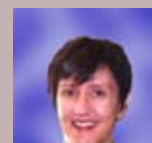
Sohaila Shakib



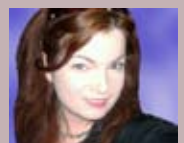
Latanya Skiffer



Sharon Squires



Clare Weber



Kara Zugman

We also have an extensive staff of part-time faculty who enhance our program and teach courses in a multitude of areas.

CONTACT

FUMIKO HOSOKAWA • UNDERGRADUATE • 310-243-3431
WILLIAM BLISCHKE • GRADUATE • 310-243-3180

SOCIAL AND BEHAVIORAL SCIENCES • BUILDING SBS-B334 • (310) 243-3431
[HTTP://WWW.NBS.CSUDH.EDU/SOCIOLOGY](http://www.nbs.csudh.edu/sociology)