



Tech Bytes

Bringing CSUDH Up-to-Date on Information Technology

Reports

and where to find them

Presented by: Alana Olschwang
Associate Vice President, UEPA

UEPA: University Effectiveness, Planning, & Analytics

Reports focused on Student Information

UEPA organizes, evaluates, assesses, and supports improvement to operations, initiatives, and efforts so that the university can determine how well it is fulfilling its mission and achieving its goals.

The office team: Alana Olschwang, Ryan Weitzman, Asha Mohammed, Olivia Navejas, Mike Ferris, Jamin Butler, & Krystal Rawls

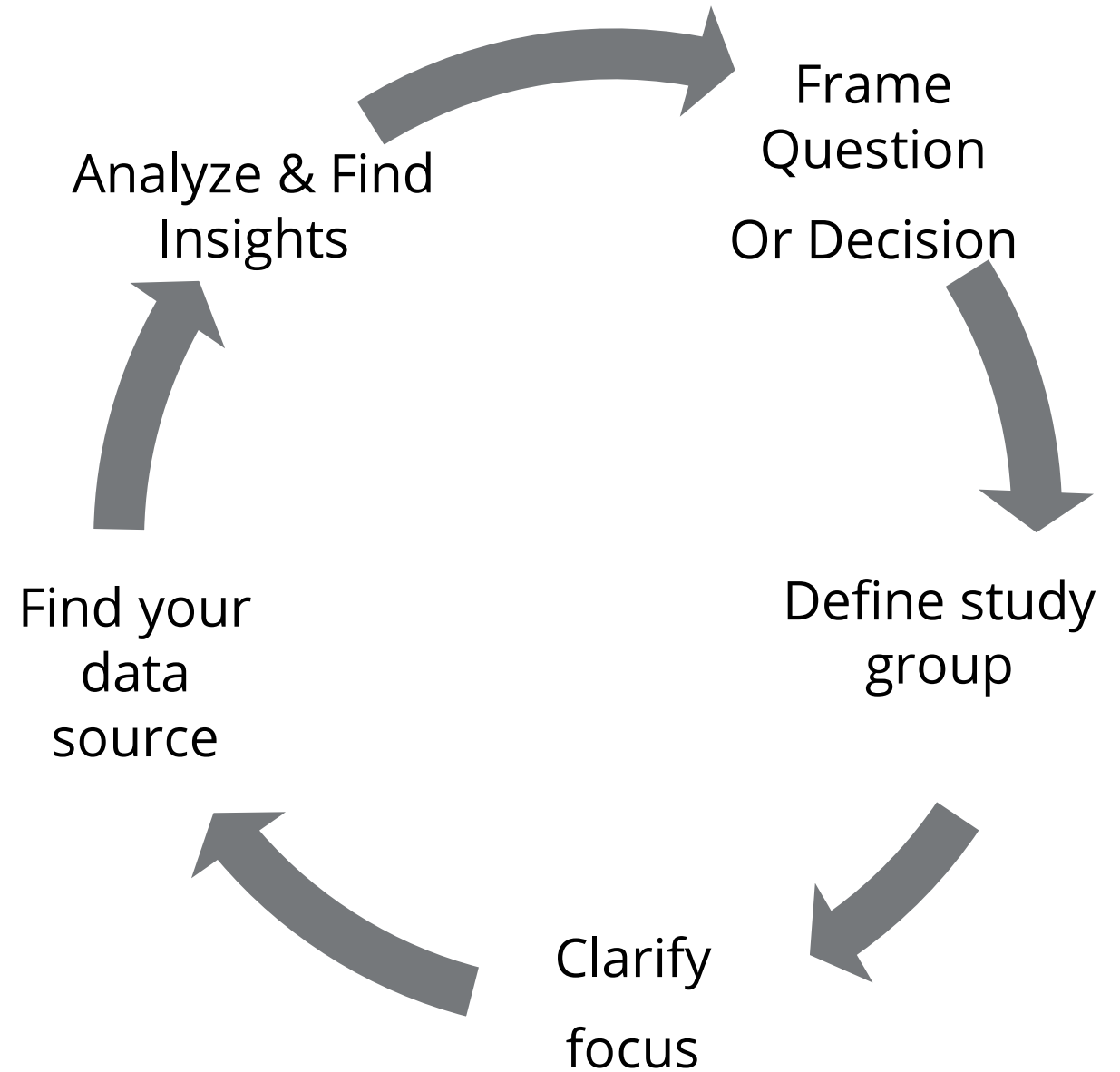
The office website reboot will be available shortly.

Focus your Question

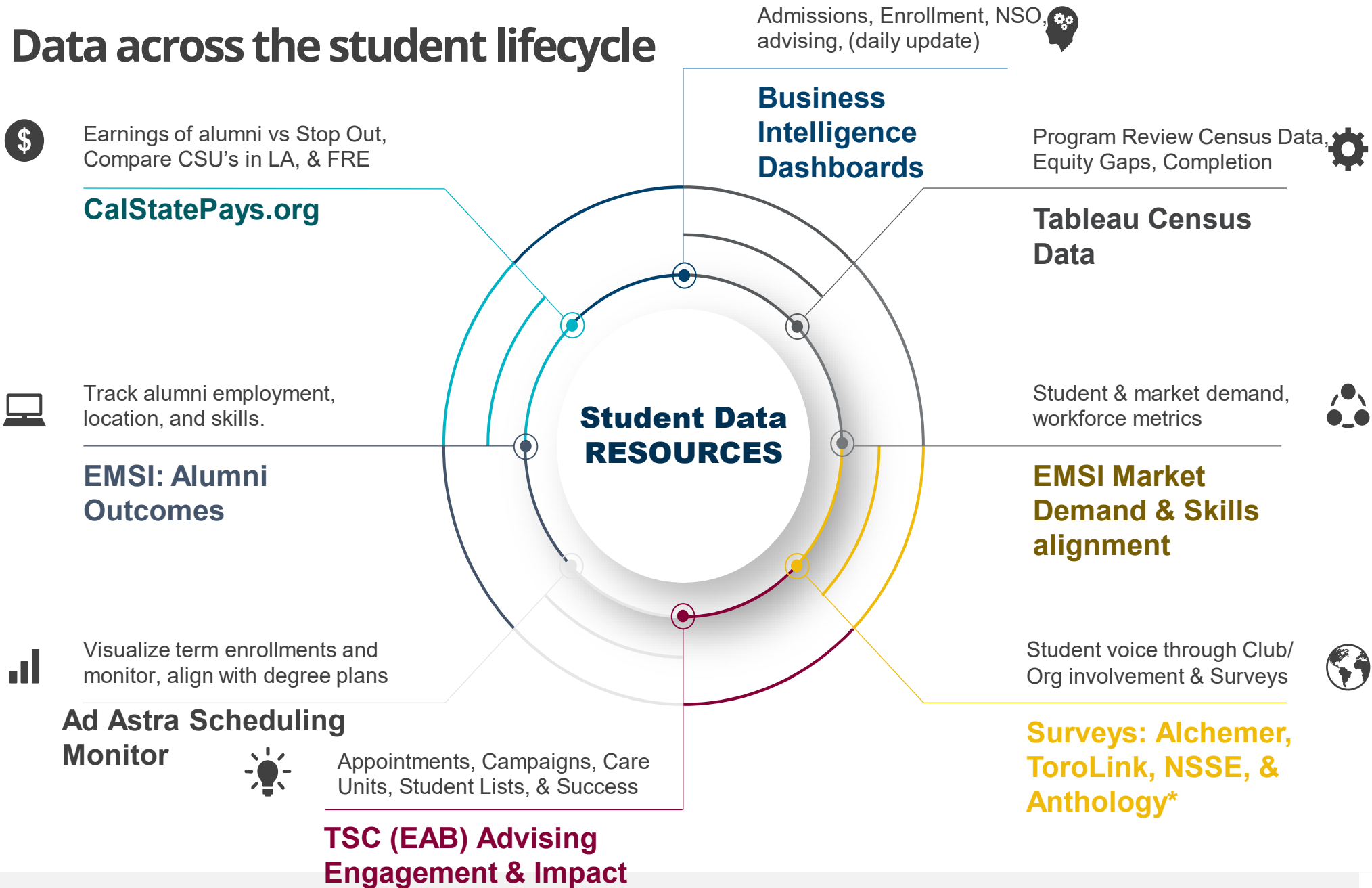
Common questions focus on:

- Relationship between something and retention, GPA, or completion.
- How many students are predicted to enroll or leave?
- Where are there equity gaps?
- What attributions can we assign to key questions
- What characteristics define success
- What opportunities exist

Define Project



Data across the student lifecycle

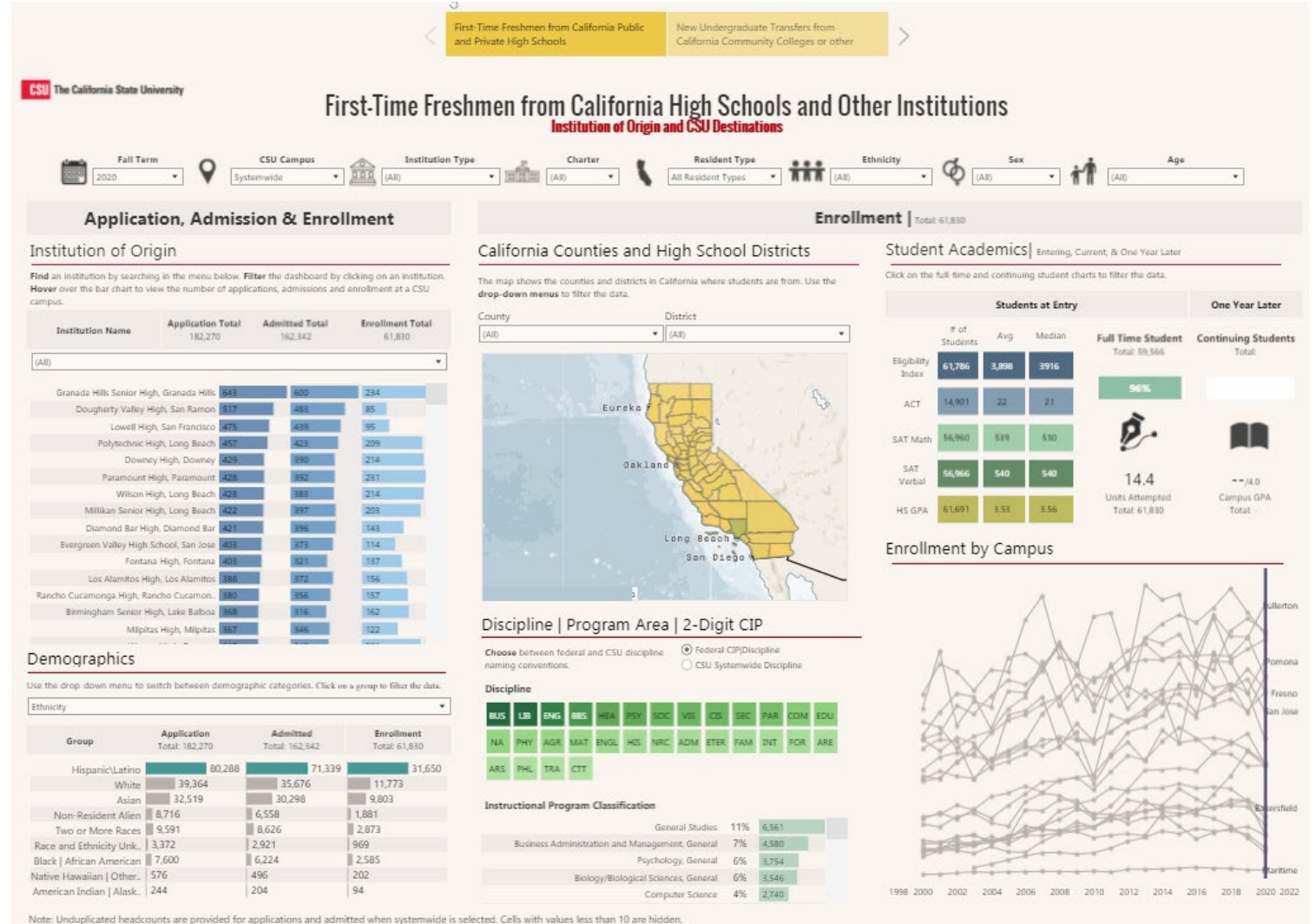


Access to some pages may prompt sign in (use CSUDH username and password). All data includes drop down for institutions, allowing for comparison to the CSU and to other campuses.



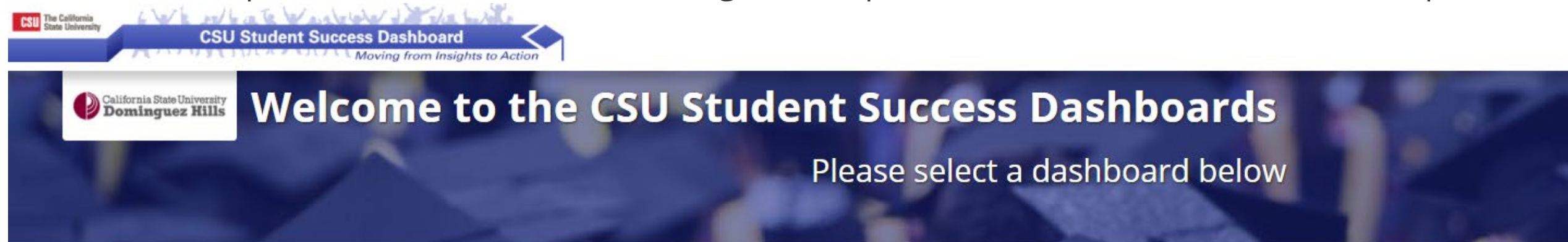
CSU Resources: Student Origin

Access to some pages may prompt sign in (use CSUDH username and password). All data includes drop down for institutions, allowing for comparison to the CSU and to other campuses.



CSU Resources: Student Success/GI 2025, Equity gaps, Pipeline, & Key Metrics

Access to some pages may prompt sign in (use CSUDH username and password). All data includes drop down for institutions, allowing for comparison to the CSU and to other campuses.



The banner features the CSU logo on the left, followed by the text "CSU Student Success Dashboard" and "Moving from Insights to Action" with a blue arrow pointing right. Below this, the California State University Dominguez Hills logo is on the left, and the main text "Welcome to the CSU Student Success Dashboards" is in large white font. Below the main text, it says "Please select a dashboard below".

CSU The California State University

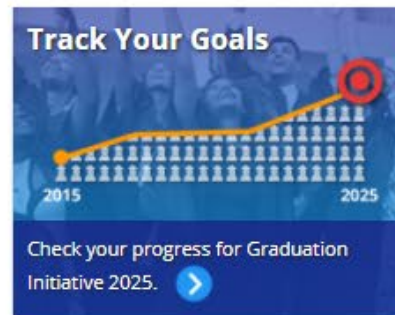
CSU Student Success Dashboard
Moving from Insights to Action

California State University
Dominguez Hills

Welcome to the CSU Student Success Dashboards

Please select a dashboard below

Graduation Initiative 2025



Faculty Dashboard



CSU by the Numbers

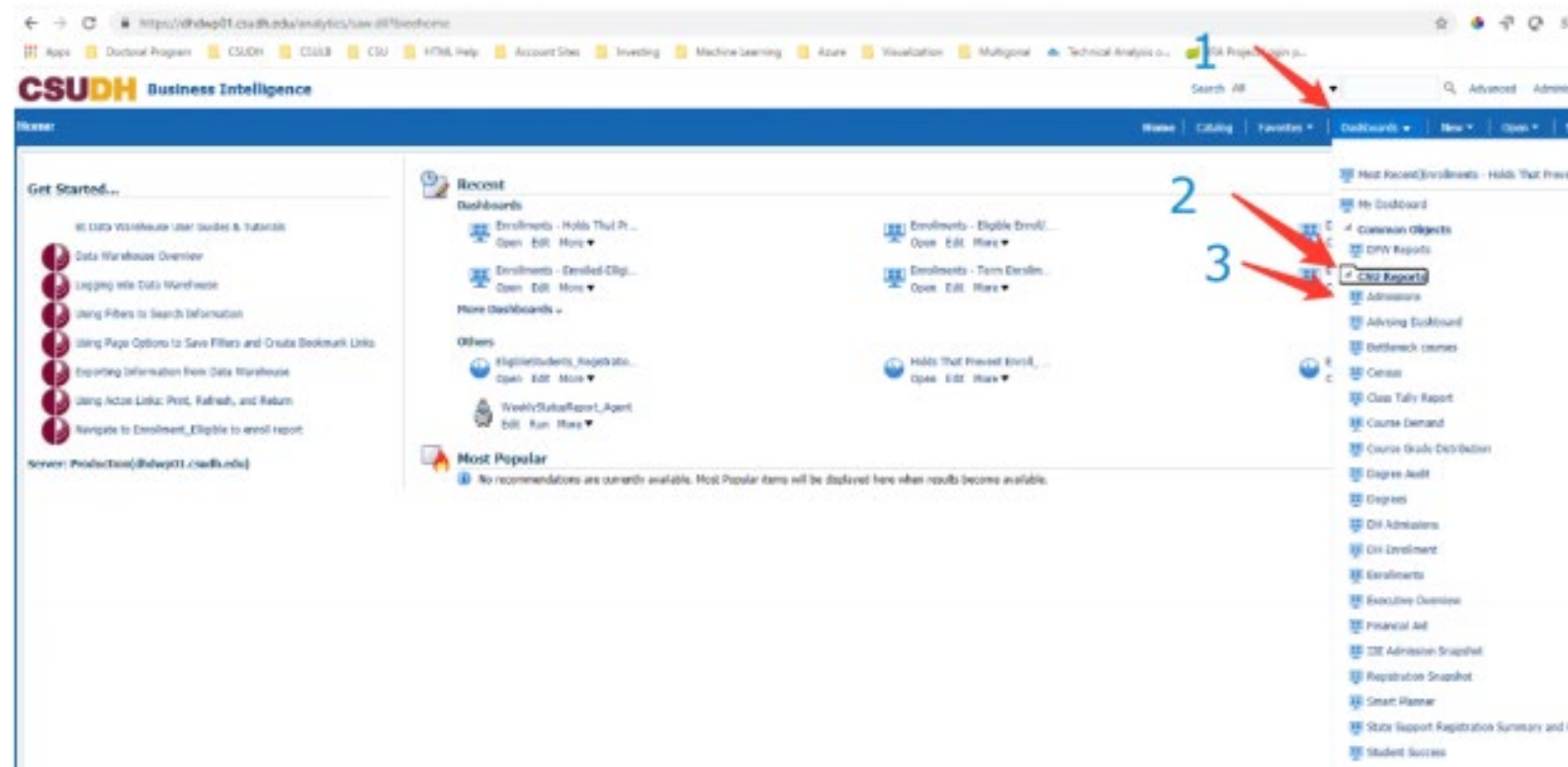
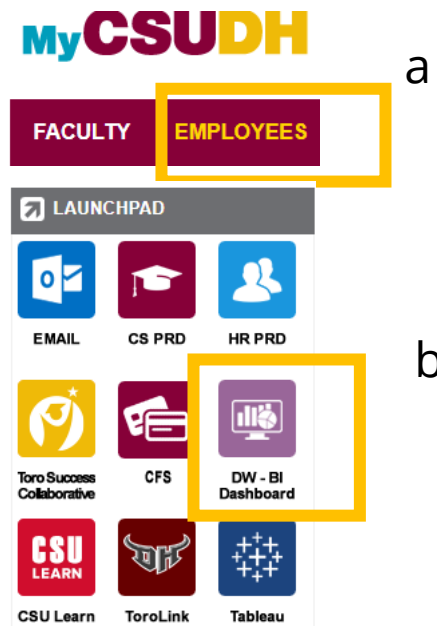


Equity Gaps Dashboard



Student Data – Business Intelligence (BI)

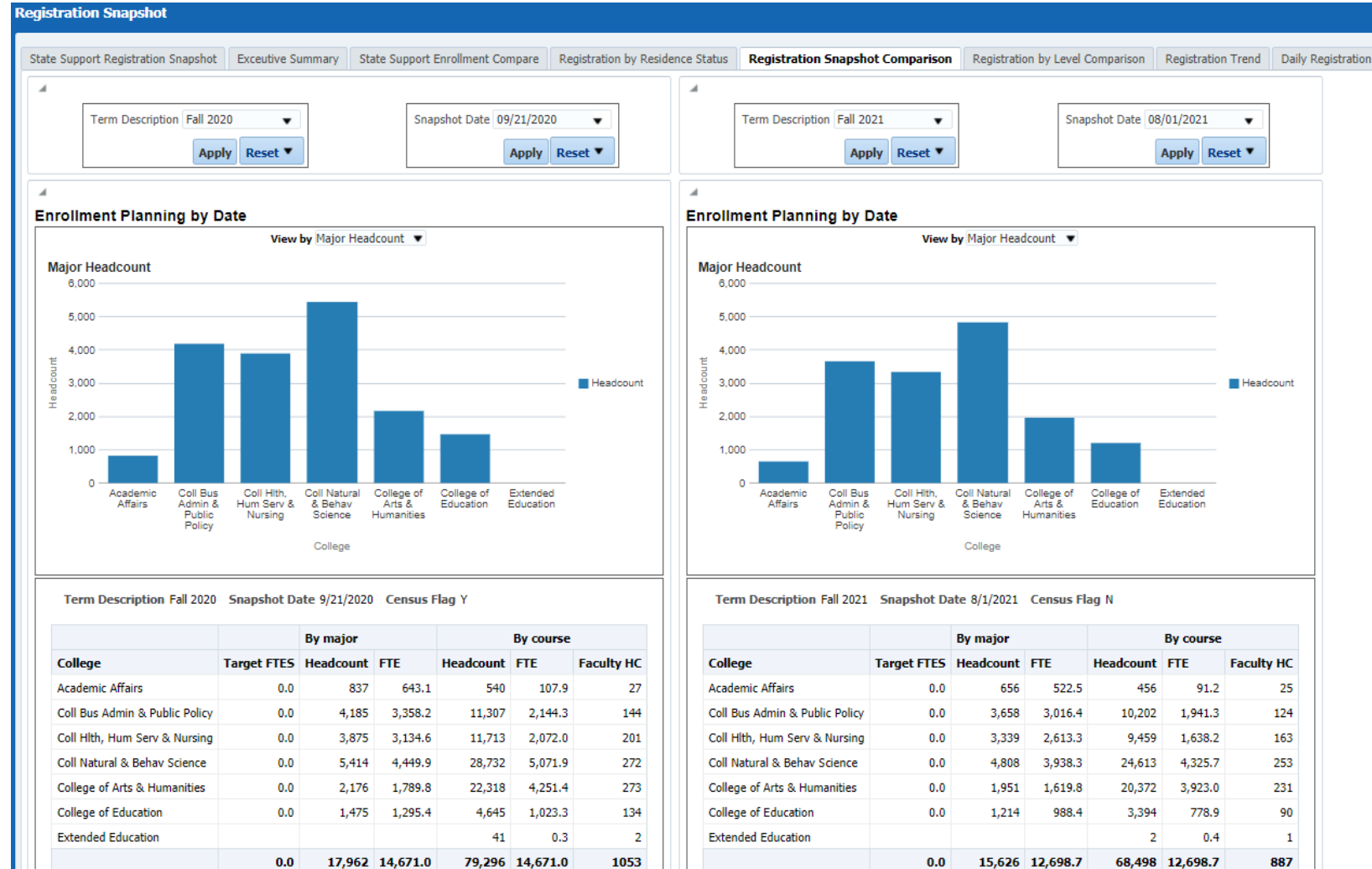
Navigate to the my.csudh.edu campus portal and (a) select 'employees' noted inside yellow box below, and then (b) Click on the launchpad icon 'DW-BI dashboard' to open the application. Once in the application, (1) select 'Dashboard', then (2) 'CSU Reports', and (3) report of interest.



Student Data – Business Intelligence (BI) 1

There are 86 individual dashboard views available across the themes:

- Admissions
- Advising
- Bottleneck courses
- Census
- Class Tally
- Course grade
- Degrees
- Enrollment
- Financial aid
- Registration snapshot...*and more*



Student Data – Business Intelligence (BI) 2

Enrollments

Home

Catalog

Favorites

Dashboards

New

Open

Signed In As: Alana Olshchwan

Eligible Enroll/Not enrolled by Class level-State Support

Enrolled-Eligible Summary

Holds That Prevent Enroll_ Eligible Students

Term Enroll By AdmitType-State Support

FTE by Term

Term Enrollment by College & Dep

Term Enrollment :Trend

Class Enrollment By College

Daily enrollment

Waitlist Summary

Course Enrollment / Waitlist

Daily Enrollment By College

Student Based Daily Enrollments by College

Term

Fall 2021

▼

Apply

Reset

▼

New and Registered

Continuing and Registered

		Freshman	Sophomore	Junior	Senior	Post-Bacc Undergraduate	Graduate	Not Applicable	Term Enrollment Count
Term Desc	Academic Organization	Term Enrollment Count	Term Enrollment Count	Term Enrollment Count	Term Enrollment Count	Term Enrollment Count	Term Enrollment Count	Term Enrollment Count	
Fall 2021	Academic Affairs	251				81			332
	Coll Bus Admin & Public Policy	649	8	440	120			1	1218
	Coll Hlth, Hum Serv & Nursing	431	6	307	180	28	45		997
	Coll Natural & Behav Science	787	23	620	176		37		1643
	College of Arts & Humanities	347	6	211	66		5		635
	College of Education	64	2	61	19	123	93		362
	Extended Education			2					2
Grand Total		2529	45	1641	561	232	180	1	5189

Refresh - Print - Export

		Freshman	Sophomore	Junior	Senior	Post-Bacc Undergraduate	Graduate	Term Enrollment Count
Term Desc	Academic Organization	Term Enrollment Count	Term Enrollment Count	Term Enrollment Count	Term Enrollment Count	Term Enrollment Count	Term Enrollment Count	
Fall 2021	Academic Affairs	117	139	21		58		335
	Coll Bus Admin & Public Policy	234	400	576	1154		32	2396
	Coll Hlth, Hum Serv & Nursing	140	322	502	1101	36	240	2341
	Coll Natural & Behav Science	310	494	760	1537		61	3162
	College of Arts & Humanities	128	236	298	622		31	1315
	College of Education	25	46	83	249	272	183	858
	Extended Education			4	8			12
Grand Total		954	1637	2244	4671	366	547	10419

Refresh - Print - Export

New and Not Registered

Continuing and Not Registered :AKA Eligible Not Enrolled Continuing Students

		Freshman	Sophomore	Junior	Senior	Post-Bacc Undergraduate	Graduate	Term Enrollment Count
Term Desc	Academic Organization	Term Enrollment Count	Term Enrollment Count	Term Enrollment Count	Term Enrollment Count	Term Enrollment Count	Term Enrollment Count	
Fall 2021	Academic Affairs	25				57		82
	Coll Bus Admin & Public Policy	67	2	40	7		100	216
	Coll Hlth, Hum Serv & Nursing	46	1	33	9	18	237	344
	Coll Natural & Behav Science	49	4	59	9		236	357
	College of Arts & Humanities	27	1	22	2		32	84
	College of Education	4		2	2	92	74	174
	Extended Education	17	3	7	6		45	78
Grand Total		235	11	163	35	167	724	1335

Refresh - Print - Export

		Freshman	Sophomore	Junior	Senior	Post-Bacc Undergraduate	Graduate	Term Enrollment Count
Term Desc	Academic Organization	Term Enrollment Count	Term Enrollment Count	Term Enrollment Count	Term Enrollment Count	Term Enrollment Count	Term Enrollment Count	
Fall 2021	Academic Affairs	141	65	13		127		346
	Coll Bus Admin & Public Policy	237	129	233	284		170	1053
	Coll Hlth, Hum Serv & Nursing	138	69	172	183	21	289	872
	Coll Natural & Behav Science	340	149	317	287		112	1205
	College of Arts & Humanities	136	64	140	128		49	517
	College of Education	17	7	13	35	286	74	432
	Extended Education			39	58		175	272
Grand Total		1009	483	927	975	434	869	4697

Refresh - Print - Export

Student Data – Program Review 1

Navigate to the my.csudh.edu campus portal and (a) select 'employees' noted inside yellow box below, and then (b) Click on the launchpad icon 'Tableau' to open the application. Once the AUP launches, (1) select tab from the data story at the top of the page, then (2) select filters to adjust data.

The image shows a sequence of steps to access student data in Tableau. On the left, the 'MyCSUDH' portal is shown with a yellow box around the 'EMPLOYEES' link in the top navigation bar and the 'Tableau' icon in the 'LAUNCHPAD' section. On the right, the Tableau 'Academic Unit Profile (AUP): State Support Census Data' dashboard is shown. A yellow box highlights the 'Student Enrollment: First Academic Plan' tab, and a red arrow points to it with the number '1'. Another red arrow points to the filter dropdowns on the left side of the dashboard, with the number '2'.

Tableau Dashboard: Enrollment by First Academic Plan

Year	Enrollment
Fall 2014	14,687
Fall 2015	14,635
Fall 2016	14,731
Fall 2017	15,179
Fall 2018	15,741
Fall 2019	17,027
Fall 2020	17,763

Student Data – Program Review 2

Cohort College
(All) ▼

Cohort Department
(All) ▼

Cohort Major
(All) ▼

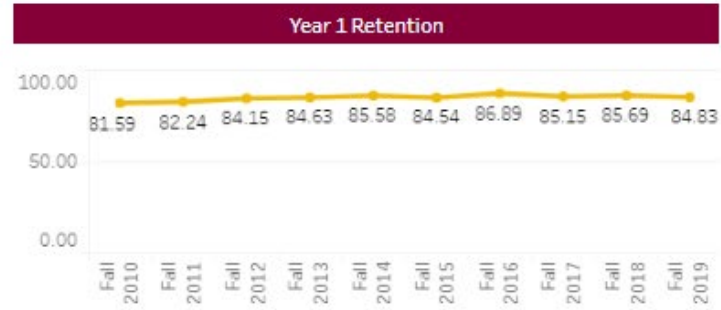
Sex
(All) ▼

Race
(All) ▼

First Generation
(All) ▼

PellEligible
(All) ▼

Cohort Major Track
(All) ▼



	Cohort										
	Fall 2010	Fall 2011	Fall 2012	Fall 2013	Fall 2014	Fall 2015	Fall 2016	Fall 2017	Fall 2018	Fall 2019	Fall 2020
Number of S..	1,950	1,791	1,609	2,408	2,496	2,581	2,525	2,647	2,753	3,316	3,120
1-Year Reten..	81.59%	82.24%	84.15%	84.63%	85.58%	84.54%	86.89%	85.15%	85.69%	84.83%	
2-Year Reten..	49.90%	53.49%	49.29%	49.92%	48.40%	45.49%	44.16%	40.39%	39.99%		
3-Year Reten..	18.82%	17.70%	16.47%	17.40%	14.98%	13.21%	13.27%	12.58%			
4-Year Reten..	6.05%	5.86%	6.46%	5.90%	5.45%	5.19%	4.51%				
2-Year Grad ..	24.51%	22.17%	27.59%	27.62%	29.93%	32.51%	36.20%	37.21%	38.39%		
3-Year Grad ..	51.69%	53.60%	57.12%	58.10%	61.14%	61.29%	64.16%	62.71%			
4-Year Grad ..	64.21%	65.49%	66.87%	69.35%	69.95%	69.39%	72.16%				



References & Resources

Reports about Student Pipelines, Learning, Bottleneck Courses, Key Levers for Success, Progress to GI2025, Student Outcomes, Skills, and CSU Benchmarking

UEPA Resources

The presentation today will focus on 2 of the most often used reports and dashboards.

Academic Unit Profile (AUP)

Program trends, filters for equity review

Visualized using Tableau

These dashboards were created to support program review and can be used for ongoing program development and trends in student enrollment and success by college, major, and student characteristics.

Application/Admission and Enrollment

Student lifecycle descriptives, daily update

Visualized using Business Intelligence (DW-BI)

These dashboards originated out of enrollment management to provide a daily update for student data that supports decision making and changes in real time as things are happening as expected or not. Additions support advisors and others.

Additional information and support documents are available with a search for Tableau or BI:
https://csudh.service-now.com/it?id=kb_view2

UEPA Resources

To request support, an ad hoc report, and inquire about services, please complete this [form](#)

Student Demand: Monitor/Align Scheduling

Track current semester & project course changes

1. Monitor student enrollment to current schedule
2. Align next semester plans with degree roadmaps, trends, mean unit loads, changes in incoming cohorts or retention, and growth
3. Identify courses that are or are not GE/Degree requirements and how resources are allocated

<https://app.adastra.live/login>

Note: this is different from optimizing scheduling

<https://www.aaiscloud.com/SSCDashboardAdmin/Portal/GuestPortal.aspx>

Career Earnings, Jobs, Industry & Employers

Program review, community engagement

1. Longitudinal Averaged earnings comparing level of degree with stop out and by quartile.
2. Industry by major
3. Earnings by industry by major
4. FRE: Financial Return on Education
5. Alumni by program: employer, location

www.calstatepays.org

www.economicmodeling.com (alumni outcomes)

UEPA Resources 1

To request support, an ad hoc report, and inquire about services, please complete this [form](#)

Program Demand & Skillabi

Create & maintain relevant programs

1. Identify size of market by student demand
2. Clarify workforce demand for program by major, skills, and certifications
3. Evaluate emerging needs by employers
4. Review largest employers in region for your degree and their hiring trends
5. Map skills to curriculum, and to careers*

<https://www.economicmodeling.com/higher-education/>

<https://www.economicmodeling.com/skills-match/>

<https://csudh.emskills.com/>

**Topic of Senate Chat on 8/19*

Student Expectations & Engagement

National Survey of Student Engagement

1. Longitudinal Averaged earnings comparing level of degree with stop out and by quartile.
2. Industry by major
3. Earnings by industry by major
4. FRE: Financial Return on Education
5. Alumni by program: employer, location

www.calstatepays.org

www.economicmodeling.com (alumni outcomes)

UEPA Resources 2

To request support, an ad hoc report, and inquire about services, please complete this [form](#)

National Surveys

1. IPEDS & NCES (National center for Educational Statistics) <https://surveys.nces.ed.gov/ipeds/>
2. Council for Graduate Schools (CGS) <https://cgsnet.org/benchmarking>
3. National Student Clearinghouse (NSC) <https://www.studentclearinghouse.org/>
4. Student Achievement Measure (SAM) student progress and completion if began at CSUDH <https://www.studentachievementmeasure.org/participants/110547>

Rankings and Guide Information

1. U.S. News and World Report <https://www.usnews.com/>
2. Petersons Guide to College <https://www.petersons.com/college-search.aspx>
3. College Board Survey
4. EDUCAUSE Spending Survey
5. Voluntary System of Accountability (VSA)

CSUDH Resources

Reports about students available from other offices

Assessing Student Learning

See the Academic Affairs Assessment Office for:

1. Accreditation process & reports
2. Program Review Reports
3. Assessing Student Learning Outcomes
4. Toro Learning & TestingCenter

<https://www.csudh.edu/academic-affairs/accreditation/>

<https://www.csudh.edu/academic-affairs/student-learning/>

Assessing the Impact of Interventions

See the Student Affairs Assessment Office for:

1. Early Alert system, process, & impact
2. Tracking progress of individual students
3. TSC Coordinated Care analytics
4. DHFYE impact (Convocation, NSO, Advising, UNV101, DYL, The Writing Center, and others)

<https://www.csudh.edu/saao/>

<https://www.csudh.edu/student-affairs/tsc/>

Thank You

uepa@csudh.edu



To request support, an ad hoc report, and inquire about services,
please complete this [form](#)