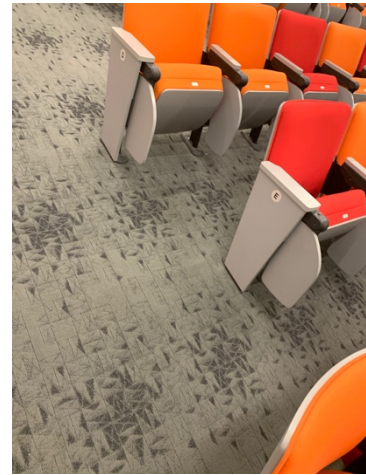
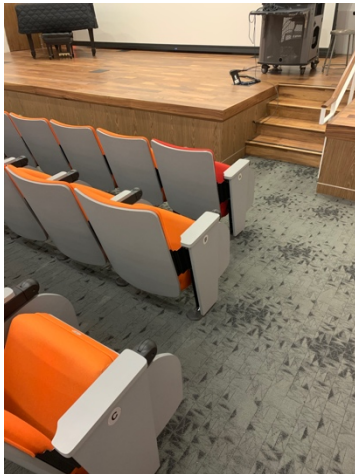


## MARVIN LASER RECITAL ALL TECHNICAL SPECIFICATIONS



### ❖ GENERAL INFORMATION

- **Auditorium**
  - Continental Seating with 2 patron entrances, ADA access to backstage area and stage.
  - Seating Capacity: 133 total. (2 ADA positions)
- **Parking**
  - The closest parking lot for events in the University Theatre Complex is Lot 6
  - All vehicles are required to purchase a parking pass (\$9 at kiosk in parking lot)
- **Policies**
  - House opens 30 minutes prior to curtain, with curtain set by the permittee.
  - Alcohol is not permitted.
  - The facility is smoke free and drug free.
  - Food and Drink are not permitted on-stage, off-stage, or in the auditorium.
- **Permits**
  - It is the responsibility of the client to arrange for any necessary permits required by City, State, or Federal Law.
- **Load In**
  - Double doors on stage right, leading to a set of double doors exiting to the outside.

## MARVIN LASER RECITAL ALL TECHNICAL SPECIFICATIONS

### ❖ DRESSING ROOMS

- There is a small single-person dressing/changing room and bathroom backstage.
- Dressing/Changing room is at stage level and is adjacent to the stage

### ❖ PIANOS & KEYBOARDS

- The Laser Recital Hall has a 6' Steinway Baby Grand Piano

### ❖ STAGE DIMENSIONS

- Width 27'6"
- Depth 15'
- Stairs (on each side) 3'6"

### ❖ LIGHTING AND ELECTRICS

- The Recital Hall has 3 light settings
  - Stage and Audience at full
  - Stage at Full
  - Audience at 50%

### ❖ LIVE AUDIO SYSTEM

- **Mixer**
  - Midas X32R located in control booth adjacent to house (located house left)
- **Patch Bay**
  - Located in control booth. 32 inputs, 16 outputs
- **On-Stage Floor Pockets**
  - 3 Pockets downstage, 2 pockets upstage
  - Each pocket has 4 inputs, 2 outputs available on stage only
- **Microphones**
  - Contact theatre manager for more information
- **House Main Speakers**
  - 2 – Turbosound speakers

### ❖ PROJECTION SYSTEM (FILM SCREENING)

- Projector
  - Epson \_\_\_ lumen projector (4K resolution)
- Screen
  - Wide-screen projection
- Emotiva XMC-1 Surround Sound Processor
  - 7.1 Surround Sound

### ❖ SMART-PODIUM SYSTEM

- The Laser Recital Hall is equipped with a Smart Podium with an Extron control system. This system gives you basic audio and projection via both a single microphone and a computer.