

NEW STUDENT ENGAGEMENT 2021



The BCSSE is a survey about New Students':

- * Prior Experiences
- * Plans for Involvement
- * Perceived Preparation
- * Co-Curricular Interest
- * Engagement Expectations
- * Impact of COVID

Blackboard ASSIST is a great starting place to find resources.

4 OUT OF 5 STUDENTS EXPECT ACADEMIC DIFFICULTY

Students reported experience with learning strategies, but less preparation with quantitative reasoning. About 1/2 of students expect to study more than before, to do collaborative learning, and to work with faculty in the coming year.

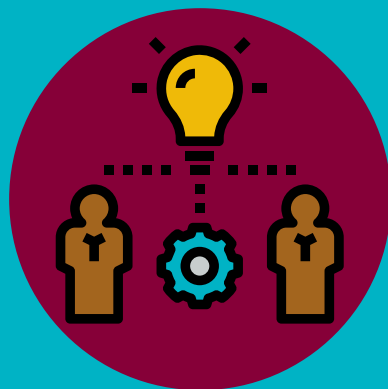


1 OUT OF 2 STUDENTS RATED CAMPUS SUPPORT VERY IMPORTANT

Students seek help with learning support and to succeed academically, to interact with other students, to manage non-academic responsibilities, and to be involved in activities on campus. Most students have 0-2 friends at DH.

2 OUT OF 3 FIRST TIME & 1 OUT OF 2 TRANSFER STUDENTS ARE NOT FULLY PREPARED

Students expressed perseverance but expect difficulty with time management, writing and speaking clearly, critical and analytical thinking, & learning material.

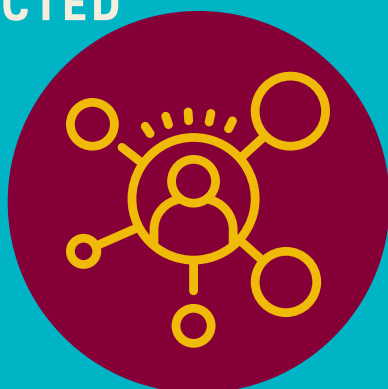


9 OUT OF 10 STUDENTS SAID CSUDH WAS THEIR 1ST-2ND CHOICE

Students are optimistic about having a successful first year and plan to graduate from here. Students were split on their preference for in-person or online modality. 1/3 expect to earn A's & 1/2 B's.

2 OUT OF 3 STUDENTS SAID COVID IMPACTED THEIR MENTAL HEALTH & WELL BEING

COVID contributed to exhaustion, depression, loneliness, concentration and ability to succeed as a student. Top concerns were for health/safety, ability to socialize, future opportunities, & paying bills.



Results from the 2021 Beginning College Survey of Student Engagement (BCSSE). Responses include 487 First time and 463 Transfer students. 25% of new students responded to the Beginning College Survey of Student Engagement (BCSSE).

Survey managed by University Effectiveness, Planning & Analytics, Report Template: Canva.com.